

ALASKA: A BIRD'S EYE VIEW

Log on to:

www.uaf.edu/asgp/k12



Alaska Space Grant Program

The Alaska Space Grant Program (ASGP) was established at the University of Alaska Fairbanks in 1991 under a program grant from NASA's National Space Grant College and Fellowship Program. The ASGP sponsors a broad range of programs to enhance teaching, research, and educational outreach within aerospace-related disciplines throughout Alaska.

Visit ASGP at www.uaf.edu/asgp

Alaska Space Grant Program
 University of Alaska Fairbanks
 Duckering Hall 225
 (907) 474-6833
fyspace@uaf.edu

Have a question?



Remote Sensing in Alaska

ANUPMA PRAKASH
prakash@gi.alaska.edu



Web Design

CHRISTIAN NIELSEN
cen@po.cwru.edu



Original Art Work

ARADHANA GUPTA
aradhanagupta27@hotmail.com



ASGP

NEAL BROWN
nbrown@eagle.ptialaska.net



Join Tutangiaq, the Canada goose, and explore a unique state from a unique perspective.



Introduction

Meet and make friends with Tutangiaq.



The Last Frontier

Learn about Alaska and see cool satellite images of some important places.



Ring of Fire

Find out how remote sensing is used to monitor Alaskan Volcanoes



Moving Ice Edge

Talk to the Walrus and learn how global warming and changing sea ice are affecting him and his friends.



The Golden Heart City

Help Tutangiaq find his family in Fairbanks using a satellite image.

Introduction

Each summer I travel across Alaska. Some people think that Alaska is part of Canada but that's not true. I love Alaska and the people that live there. In fact, they gave me my name!



Ring of Fire

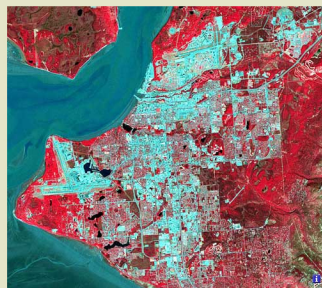
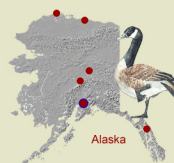


Oh it's hot! Let's move on to a cooler place!

The Last Frontier

Anchorage

Anchorage is by far the largest city in Alaska, with 41.5 percent of the state's total population. That equates to a little more than 260,000 people.



Moving Ice Edge

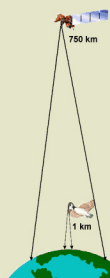
You're right Tutangiaq. We walrus use sea ice as an important place to rest, breed, and molt. The ice breakup has been occurring earlier in the year and its edge receding further now than even a decade ago. Look at these satellite images which preserve a record of how the sea ice edge has changed over the years. Of course, we need data for many more years to establish a reliable trend.



Data from week 37 (2nd week in September) for each year.

Ring of Fire

You humans have sent up satellites into orbit that look back at earth from much higher up than I could ever fly! From my perspective, I can usually see only one volcano at a time, but a satellite orbiting earth at 700 to 800 kilometers I can look at an area 185 kilometers wide in one pass.



The Golden Heart City



Fairbanks sits along the winding Chena River just north of the much larger Tanana River. Whenever my family is passing through town, we always stop at the University of Alaska Fairbanks. Do you think they might be there now?

The UAF campus is located West of Downtown Fairbanks and North of the Fairbanks International Airport, just across the Chena River. The Airport can be identified by its long straight runway and adjacent float pond. Can you help me by clicking on the campus? Use this city map for more clues.

