



**FLIR DATA ANALYSIS OF THE
RELATIONSHIP BETWEEN ICE
TEMPERATURE AND BODY
TEMPERATURE OF HARBOR
SEALS IN JOHN HOPKINS INLET,
ALASKA**

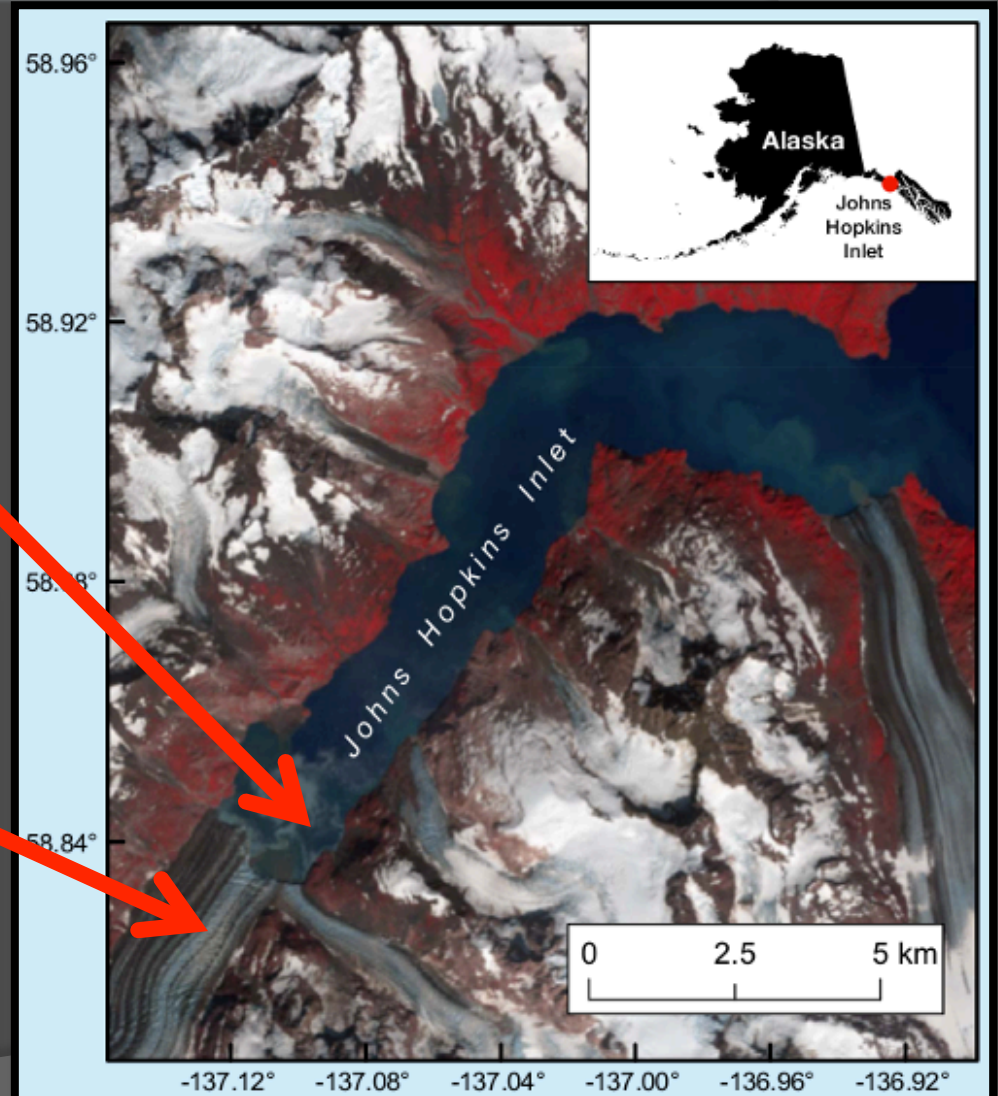


By: Emily Pendergrass

Why Do We Care?

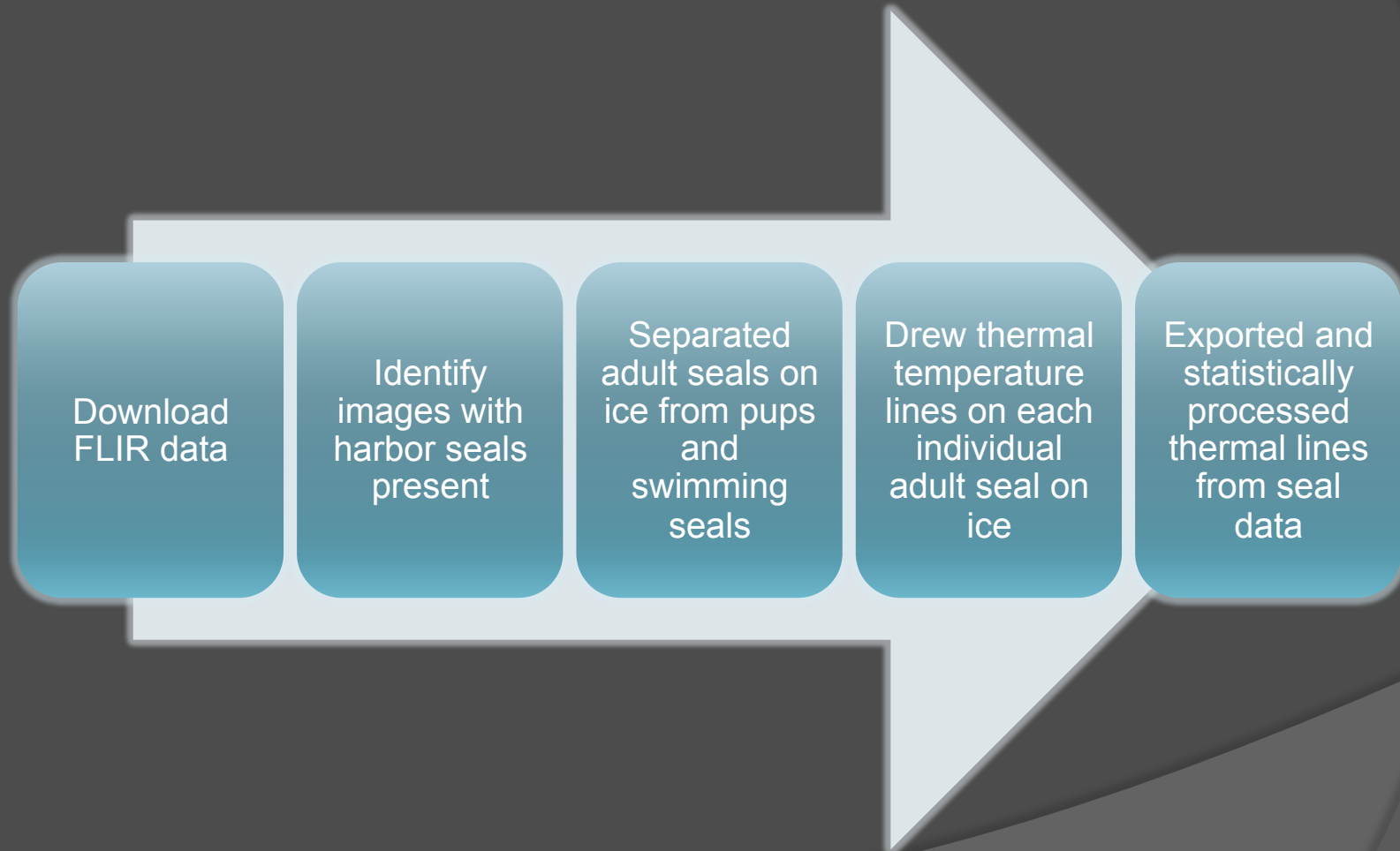
- Very little information on these animals
- Very little is know about their habitat preferences
- Global warming is destroying ice related habitats

Study Area

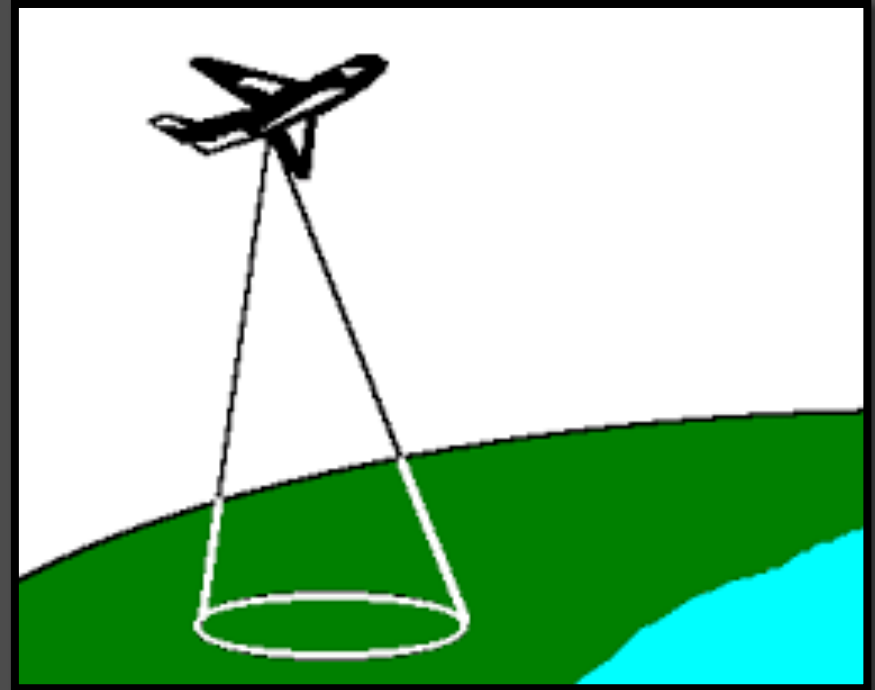
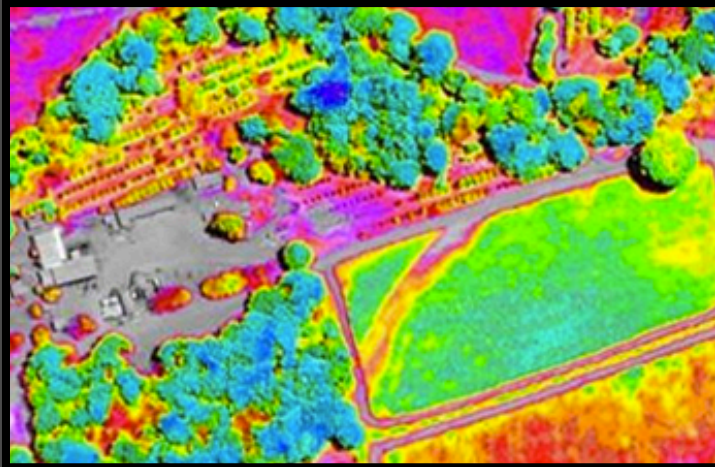


Map source: <http://harborseals.alaska.edu/contacts.html>

Work Flow Chart



FLIR Data



Thermal Harbor Seal Images

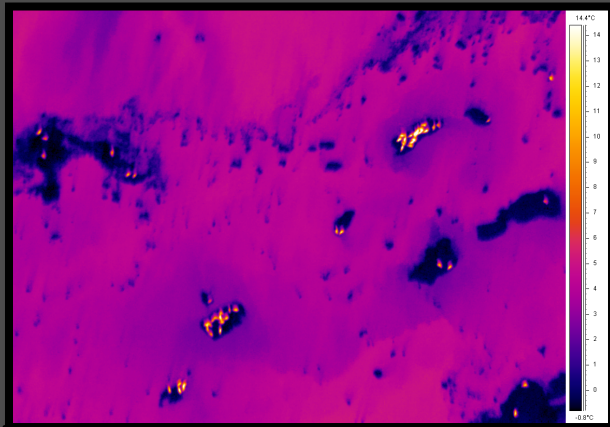


Image 1

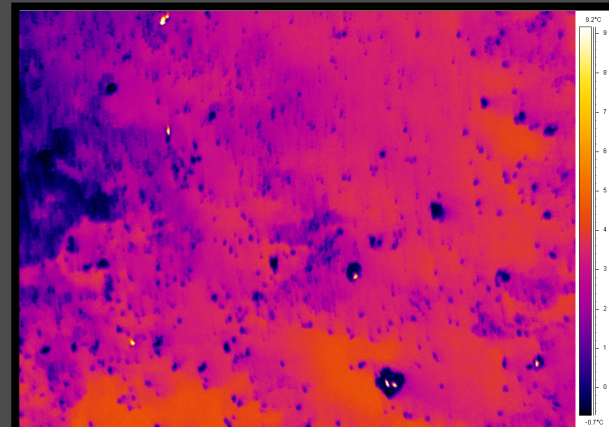


Image 2

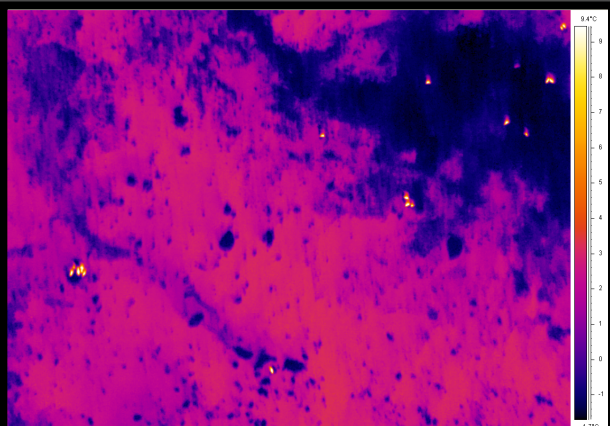


Image 3

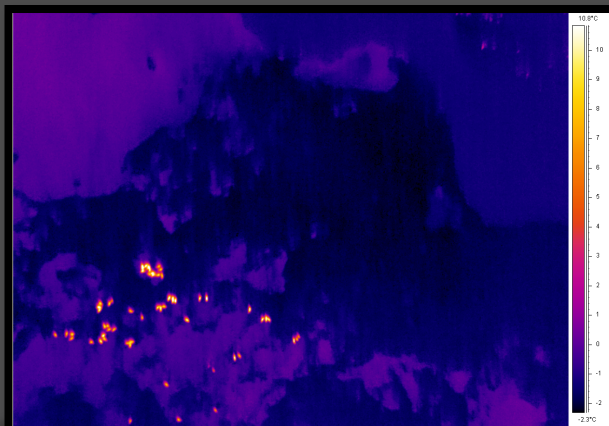


Image 4

Infrared Harbor Seal Images

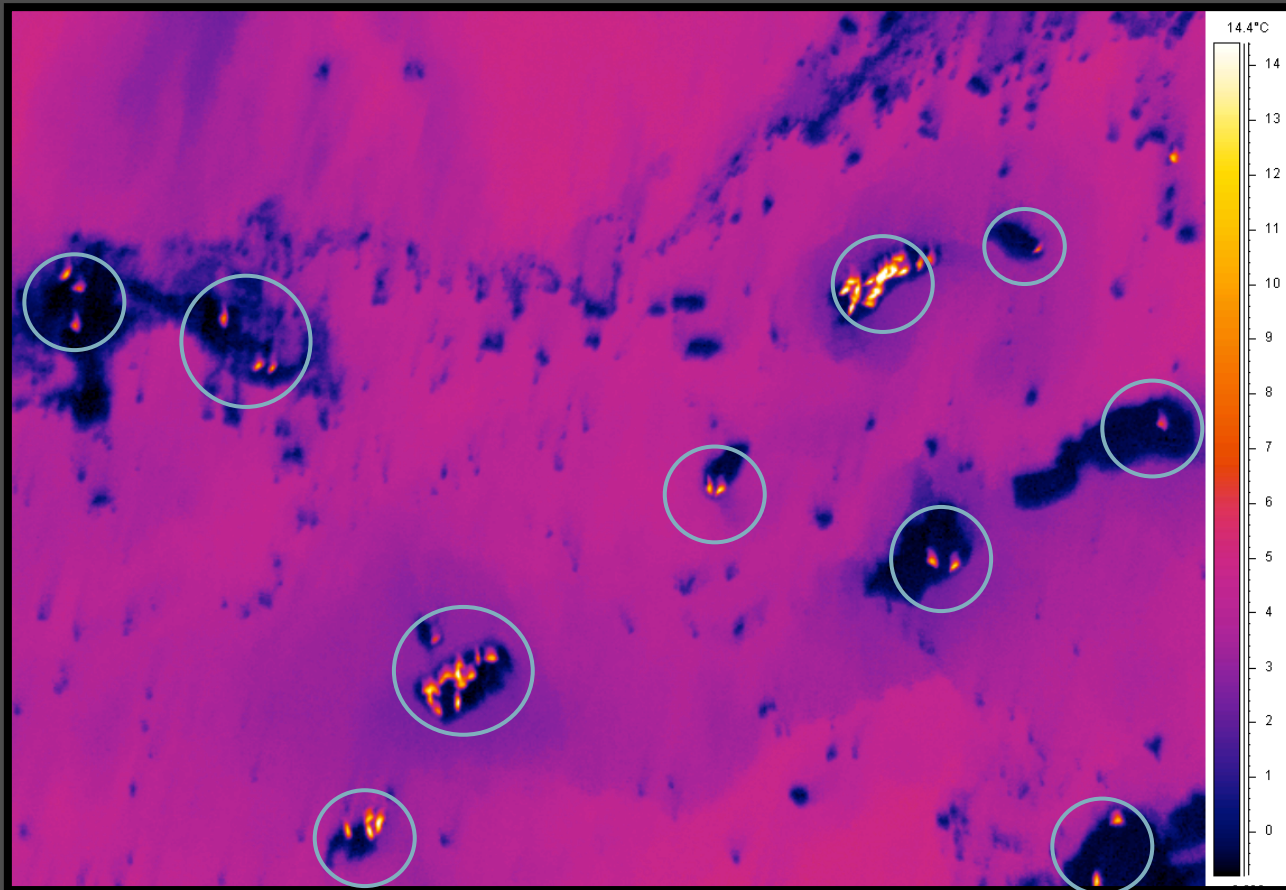
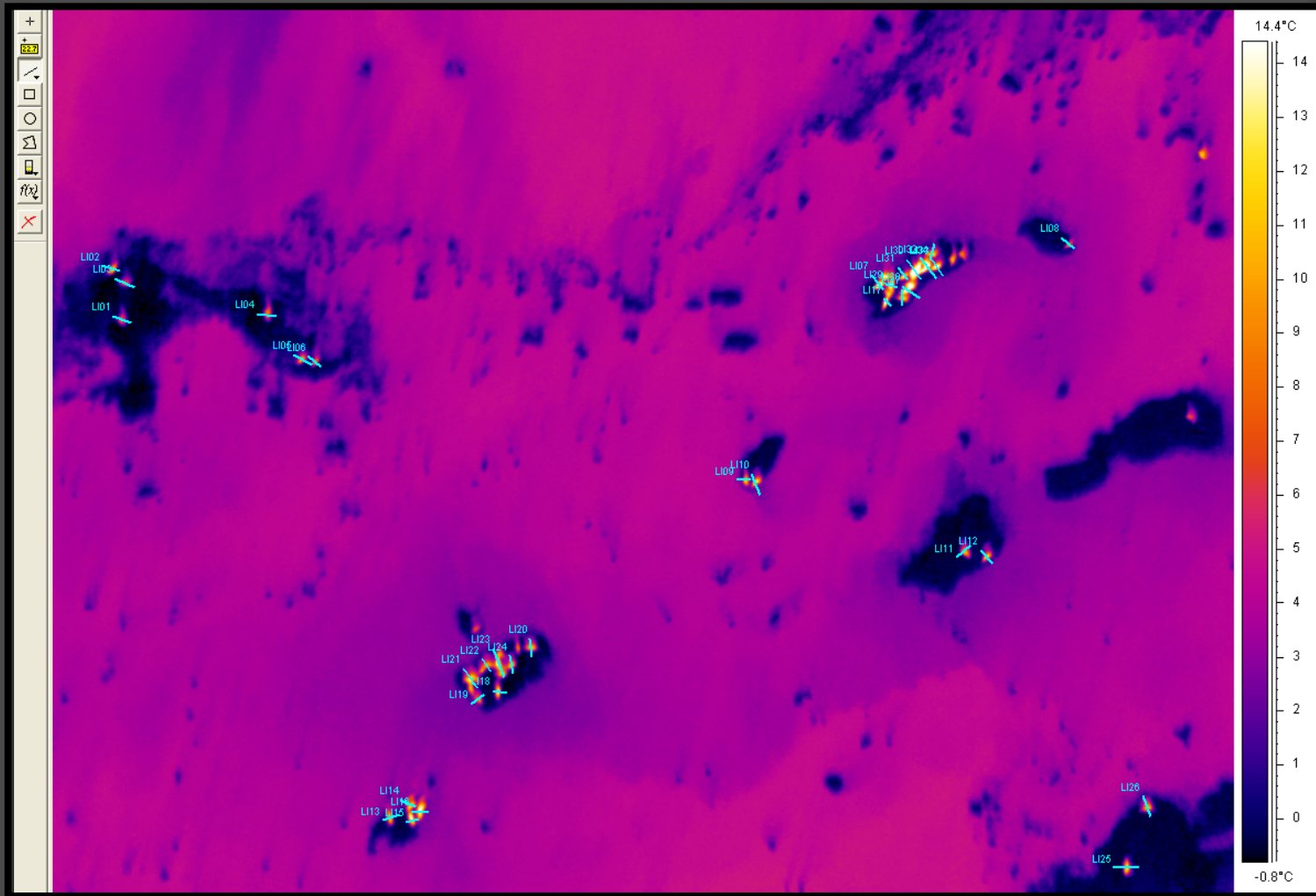
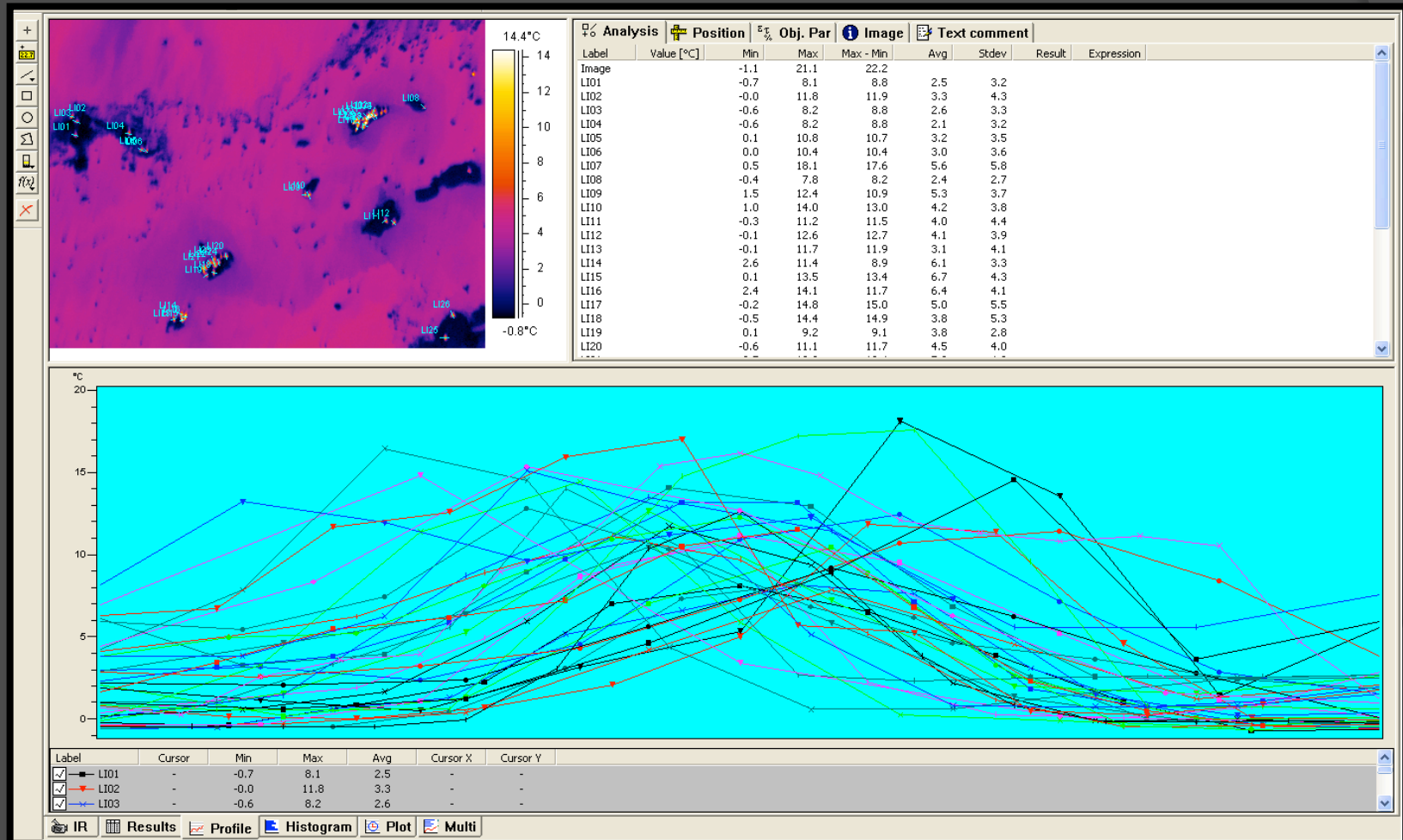


Image 1

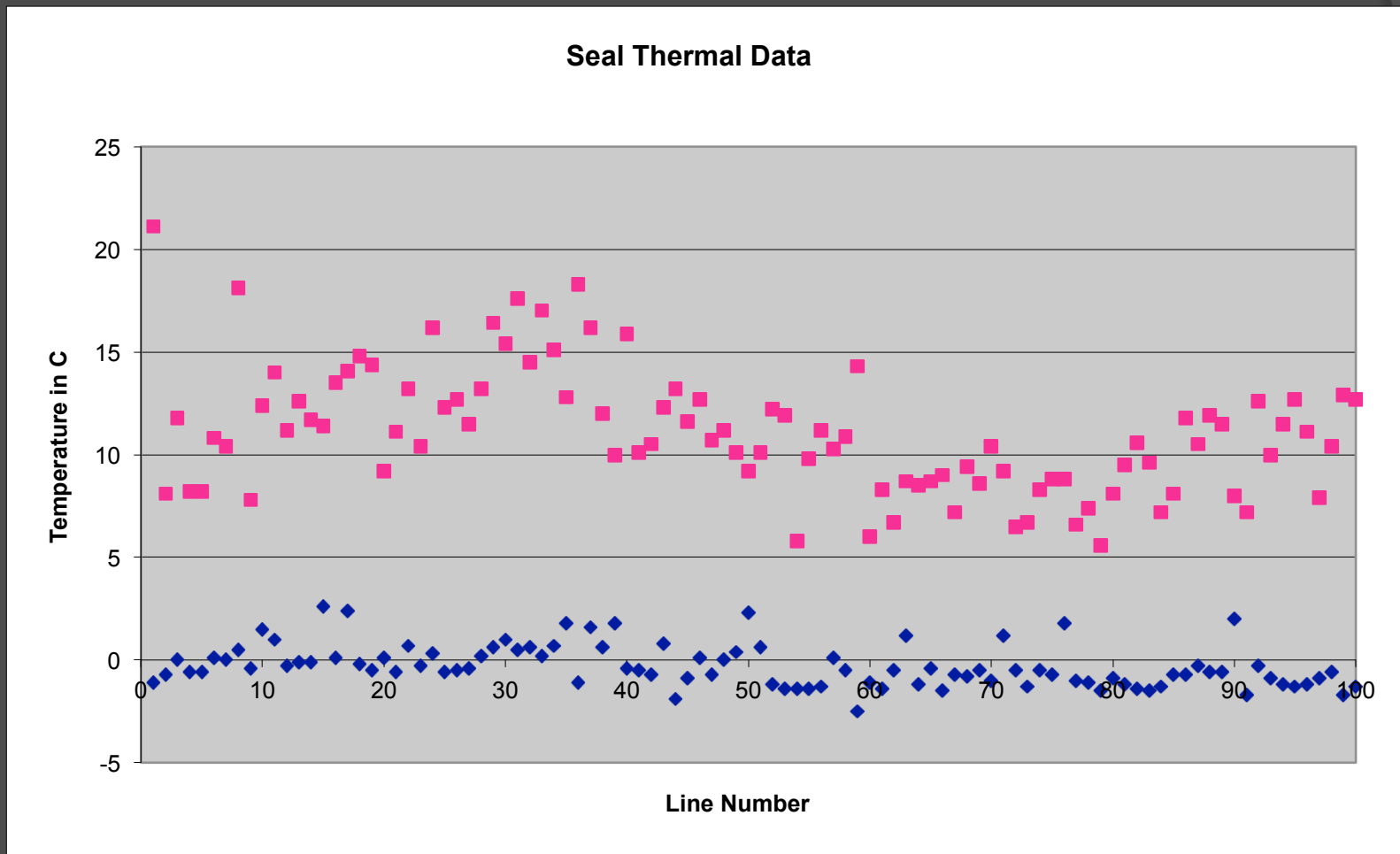
Drawing Thermal Lines



Data Analysis



Data Results



Conclusion

- ◎ This data shows that there is a threshold (at about 5 degrees Celsius) between the body temperatures of the seals and the ice temperature of their habitat.
 - This could be used in the future to separate out all of the seals from the data via supervised classification of FLIR temperatures.

Future Questions

- ⦿ Correlation between measured external body temperature and actual seal mass
- ⦿ Does sea ice have a specific size to temperature ratio or threshold

References

- ◉ <http://harborseals.alaska.edu/contacts.html>
- ◉ Quantifying the Availability of Tidewater Glacial Ice as Habitat for Harbor Seals in a Tidewater Glacial Fjord in Alaska Using Object-Based Image Analysis of Airborne Visible Imagery via: <http://adsabs.harvard.edu/abs/2013AGUFMGC23D0976P>, Volume: 2013AGUFMGC23D0976P
- ◉ <http://www.nps.gov/glba/learn/nature/seal.htm>
- ◉ JANSEN, J. K., P. L. BOVENG, J. M. Ver HOEF, S. P. DAHLE, and J. L. BENGTON. 2015. Natural and human effects on harbor seal abundance and spatial distribution in an Alaskan glacial fjord. *Mar. Mammal Sci.* 31:66-89. (.pdf, 800 KB).
- ◉ Douglas, D. (2010). Arctic Sea Ice Decline: Projected Changes in Timing and Extent of Sea Ice in the Bearing and Chukchi Sea. Retrieved November 28, 2015, from <http://pubs.usgs.gov/of/2010/1176/pdf/ofr20101176.pdf>

Acknowledgments

- ◎ I would like to thank Dr. Prakash and her husband for providing the data and Chris Waigl for a crash course in FLIR data processing.

Questions

